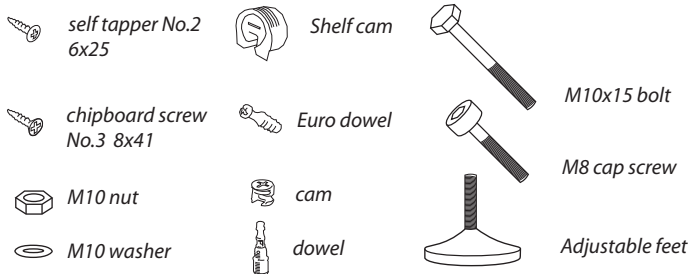
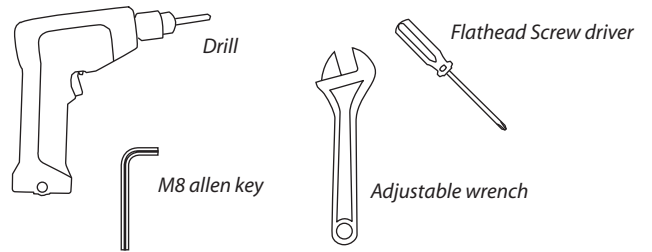


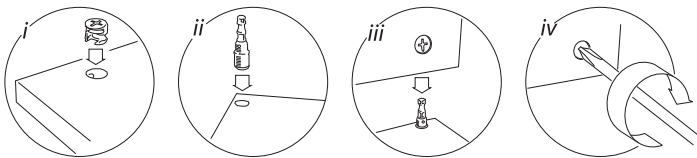
## Parts included



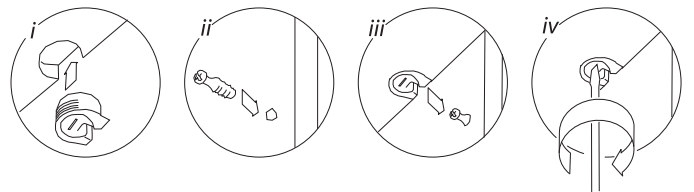
## You will need the following...



## Cam and dowel Instructions



## Camfix Instructions

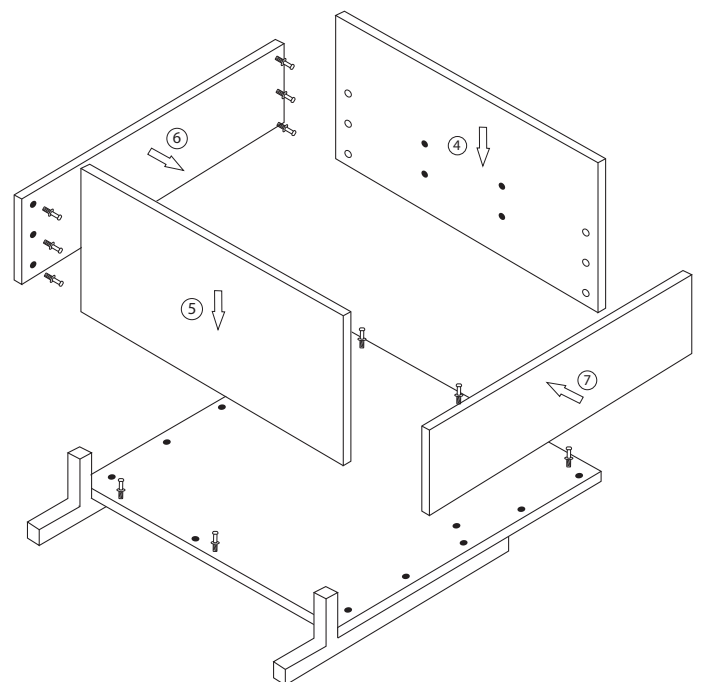
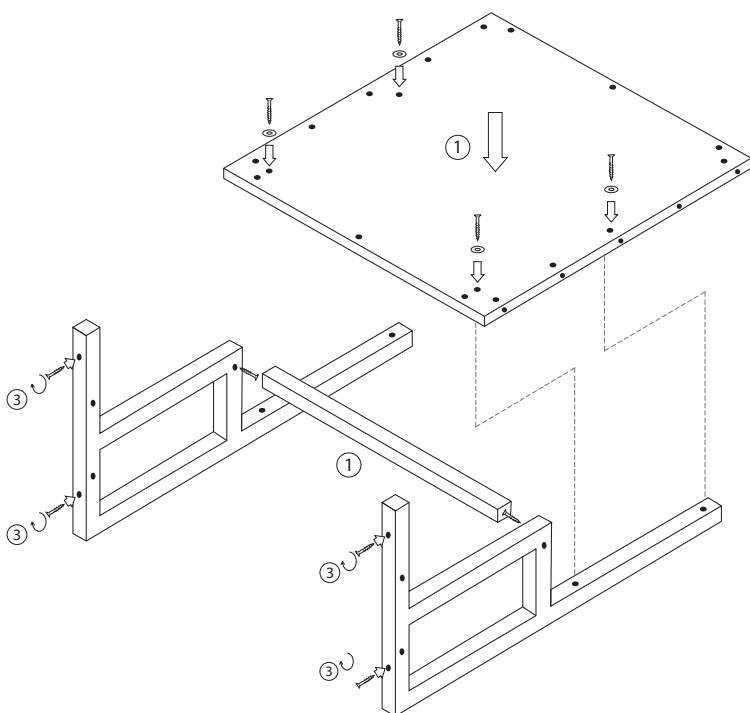


## Step 1

- ① Lay the legs on the back and use the M8 x 15mm CAP screws to fix the support rail to the legs
- ② Using the M10 x 25mm cap screws with washers, fit the MDF back to the legs. (the cam and dowel holes should face up)
- ③ Screw the adjustable feet into the bottom of the legs

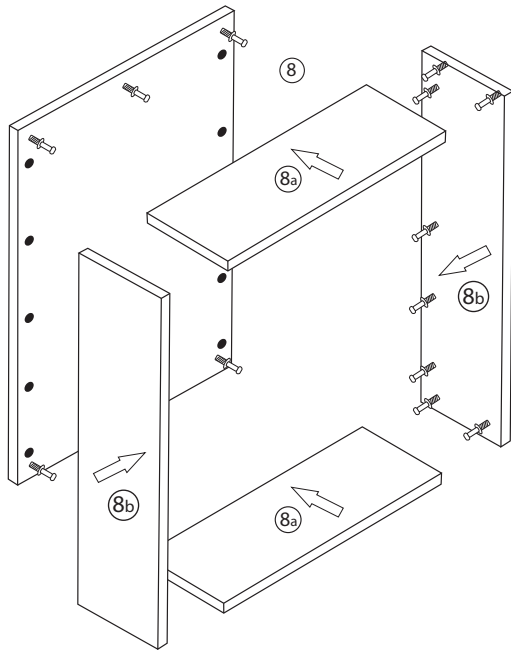
## Step 2

- ④ Fit top to back
- ⑤ Fit bottom  
Note: Cam holes face inside of unit
- ⑥ Fit left side
- ⑦ Fit right side  
Note: Shelf pin holes to be closest to the bottom



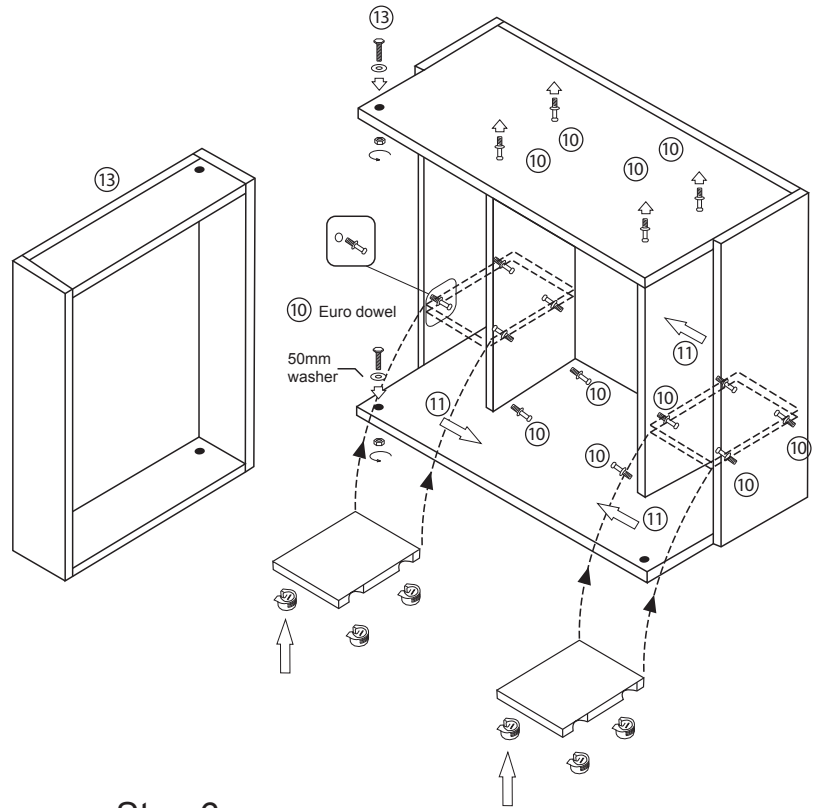
### Step 3

- ⑧ Assemble doors
- ⑧a Fit top and bottom to back
- ⑧b Fit left and right sides



### Step 4

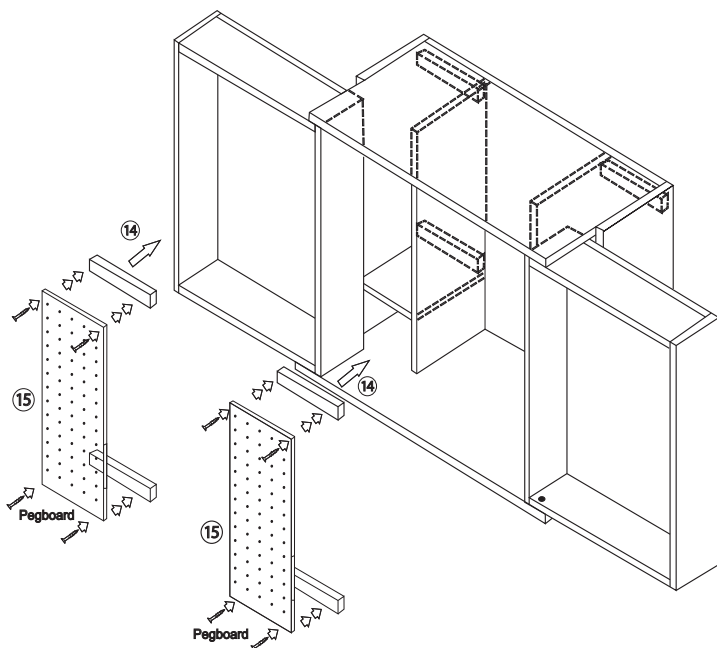
- ⑨ Knock white shelf cams into the holes in both divisions and both fixed shelves, with the flat edge lining up with the edge of the board
- ⑩ Screw fix euro dowels in the holes in the division and sides
- ⑪ Fit left division on left side of unit, so that the banks of adjustable shelf holes face to the middle of the units with the bank of shelves at the top. Fix the right hand division in the same manner.
- ⑫ Fit the fixed shelves
- ⑬ Using M10x50mm bolts fit the left and right hand doors. 42mm washer must be placed between underside of the door and bottom of the unit.



### Step 5

- ⑭ Using 25mm self tapper screws fix the timber bottoms to the top and bottom of door sections
- ⑮ Using 20mm self tapping screws fit the pegboard to the battens. Also fit pegboard to the insides of the swing doors to the left and right sections of the main unit

Note: No holes have been drilled for steps 14+15



### Step 6

- ⑯ Tighten bolts to ensure no play between the struts and the frame and bench. Note: Movements should be relatively stiff.
- ⑰ Use 8x25mm self tapping screws to fix worktop to the angle bracket.

