

WARDROBE

SmartPack

you've got it made...

Thank you for choosing SmartPack.

For any further advice, comments or suggestions, please contact your local distributor.

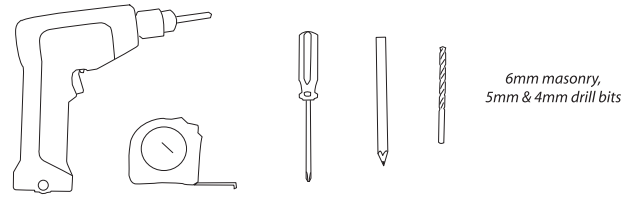
Individual unit assembly drawings and further information can be obtained from our web site

www.smartpackkit.com.au

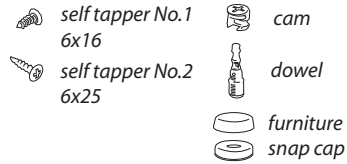
We assure you that you will be as proud of the end product as we have been to supply it to you.

1

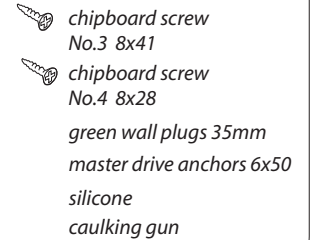
you will need the following...



we supply the following fixings.....

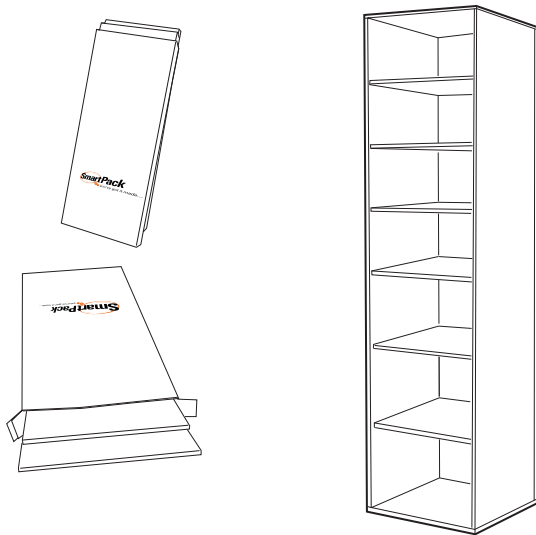


supplied with optional installation kit



2

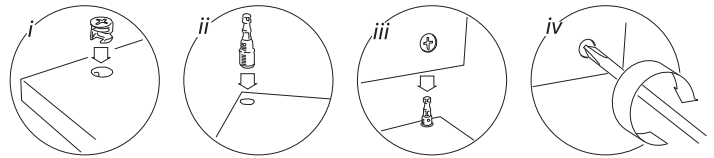
unpack and assemble units one at a time, on their side, stacking them away from the immediate work area.



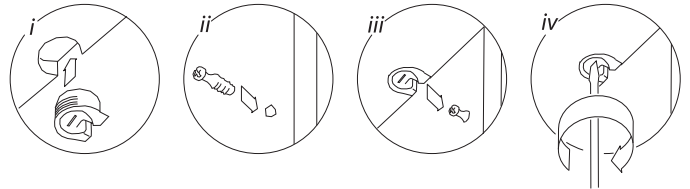
3

each unit will be assembled in the same manner

cam and dowel (unit assembly)

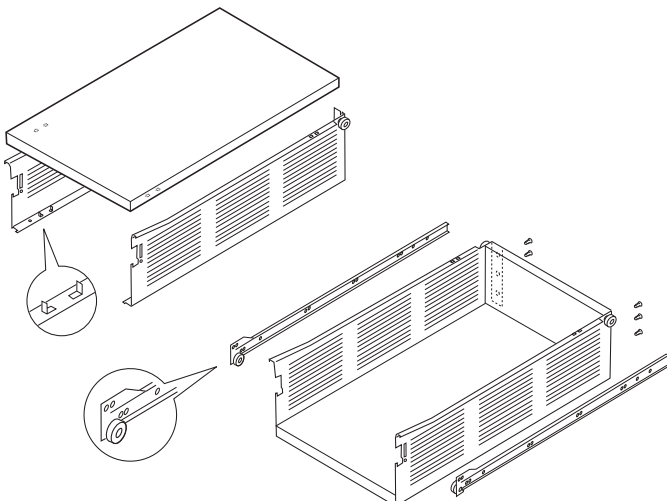


camfix (fixed shelves)



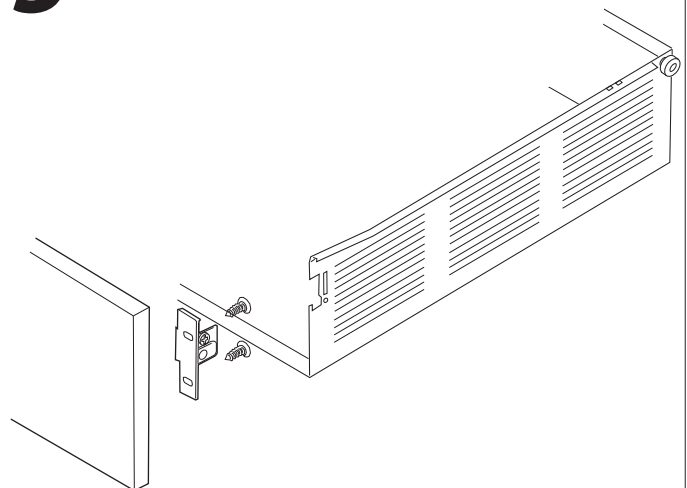
4

drawer assembly arrangement



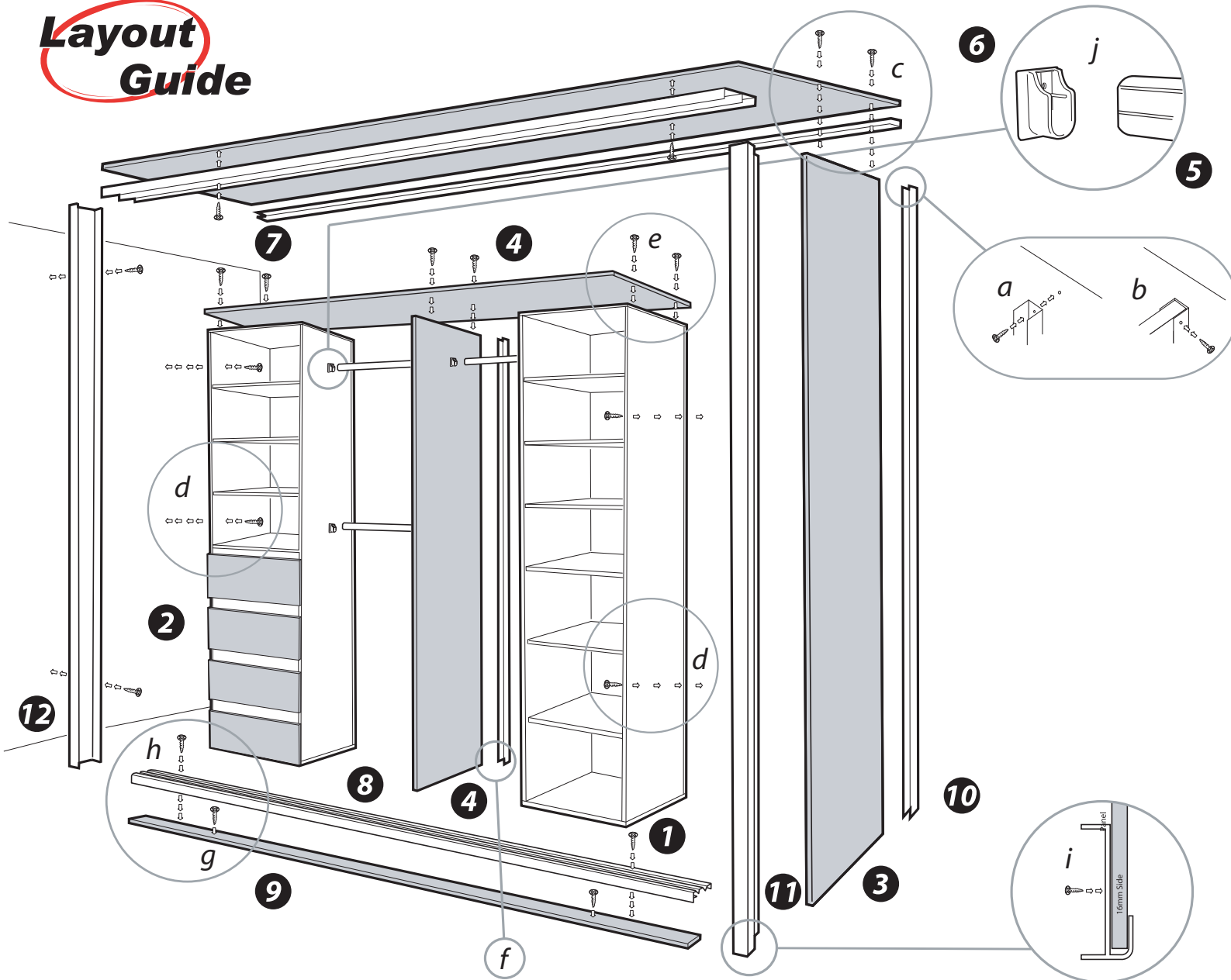
5

drawer front assembly



detailed assembly drawings of each unit are included in SmartPack kits

Layout Guide



Installation Procedure a - j

- a) fix U channels to wall using plugs/anchors and slide in panel/s top and side
- b) secure panel through U channel using screw No.1
- c) fix the top to side panel/s using No.3 screw
- d) place shelf/drawer unit/s against the panel or wall and secure through side using chipboard screw No.4
- e) fix top shelf to shelf/drawer units using method in 'c'
- f) fix channel and divider panel as shown in a & b, screw down through top shelf using screw No.3
- g) after cutting, fix the bottom baton flush with the front of the side panel by screwing to the floor
- h) after cutting to length, screw the bottom track to the baton and the top track to the top panel or the ceiling using screw No.1
- i) Optional jambs can be fitted to the wall or the side panel using screw No.1
- j) after cutting to length, fix the rod end supports to unit sides/division using screws provided.

Screw snap caps are provided to cover exposed screw heads

1 SmartPack Shelf Unit

4 16mm Top Shelf / Division

7 Top Track

10 U Channel (option for fixing panels)

2 SmartPack Drawer Unit

5 Aluminum Oval Hanging Rod

8 Bottom Track

11 Return End Jamb (optional)

3 16mm Side Panel

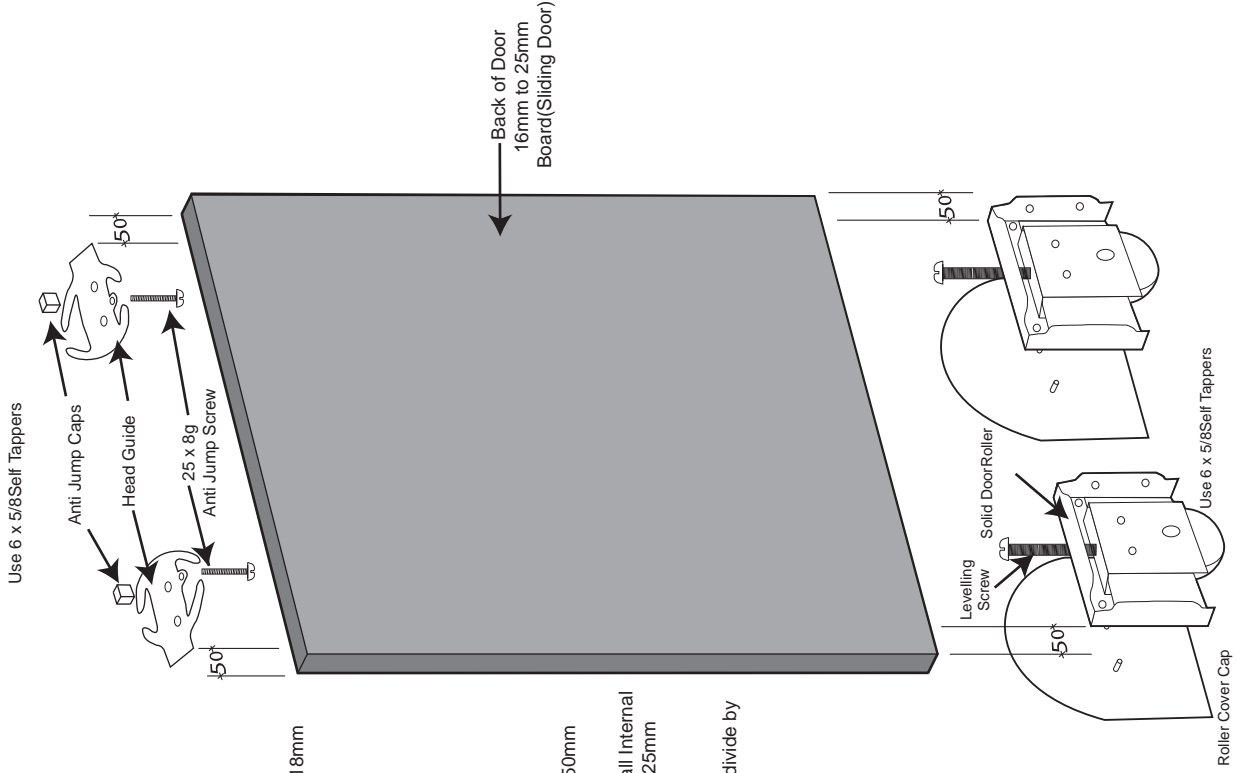
6 Hanging Rod Flange

9 Bottom Track Support

12 End Jamb (optional)

For sliding door preparation, unit and panel assembly please refer to instruction page 3

PANEL ASSEMBLY



NOTE:
 Cut Head Guide End
 when using 16mm or 18mm
 Panelboard for Door

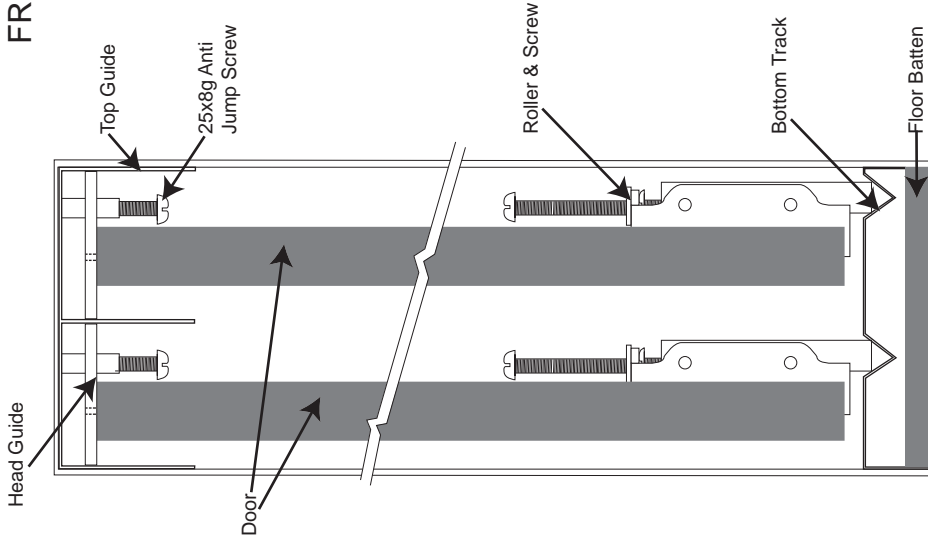


**TO CALCULATE
 DOOR SIZES**

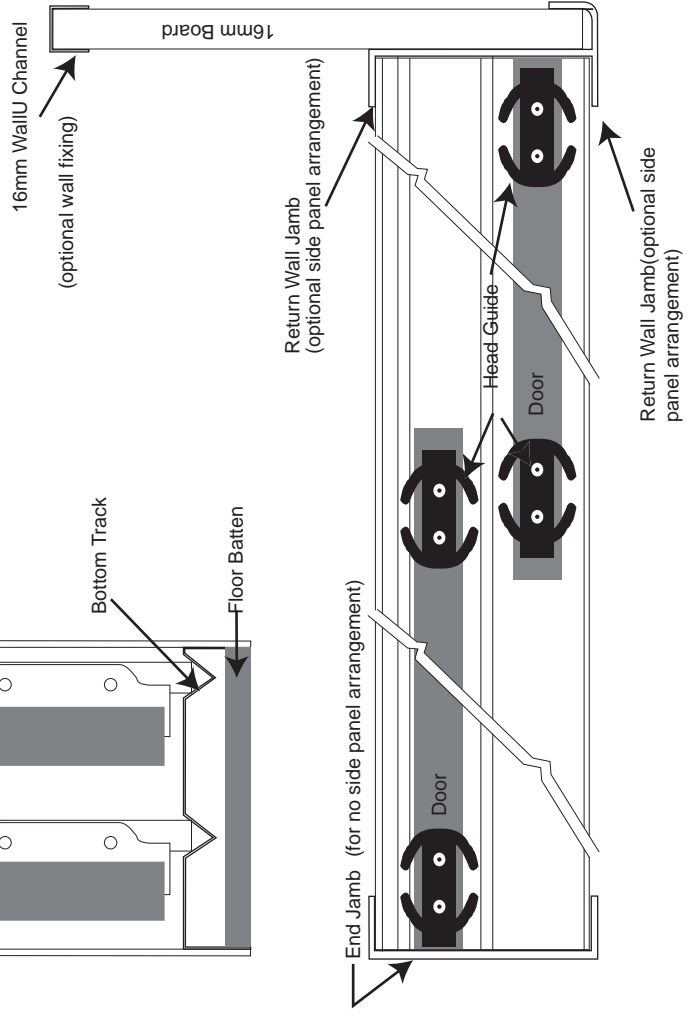
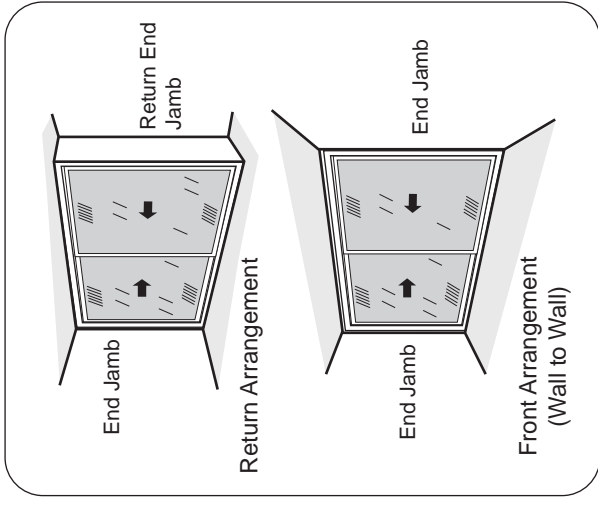
Door Height:
 Overall Height minus 50mm

2 Door Opening: Overall Internal
 width divide by 2 plus 25mm

3 Door Opening:
 Overall Internal width divide by
 3 plus 25mm



FRONT AND RETURN ARRANGEMENT



SmartPack

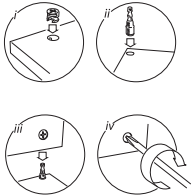
you've got it made...

Custom robe units will require the same tools and be assembled in the exact same manner as SmartPack units listed overleaf, with a few exceptions.

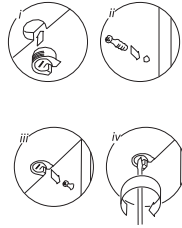
The following instructions will aid in the layout and assembly of the custom built units.

If you require any further assistance please contact your local distributor

cam and dowel (unit assembly)

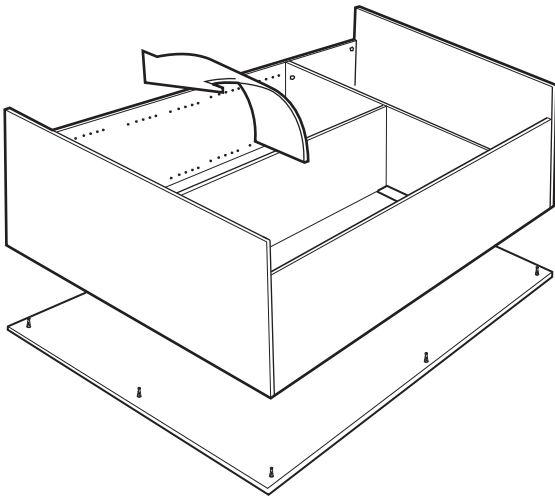


camfix (fixed shelves)



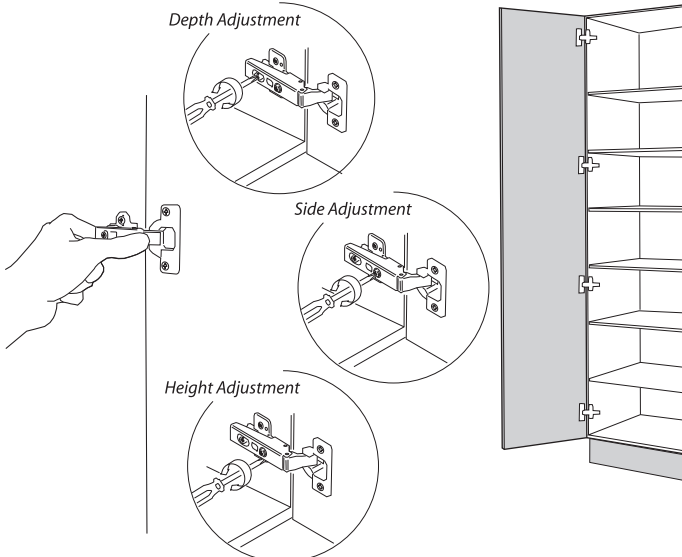
sliding doors

3 once units are assembled raise upright and position in desired location



hinged doors

3 hang doors and adjust hinges using the following methods

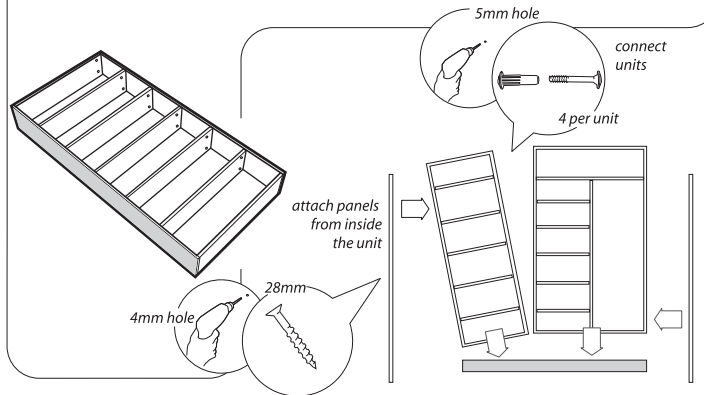


1

unpack and assemble units one at a time, on their back

2

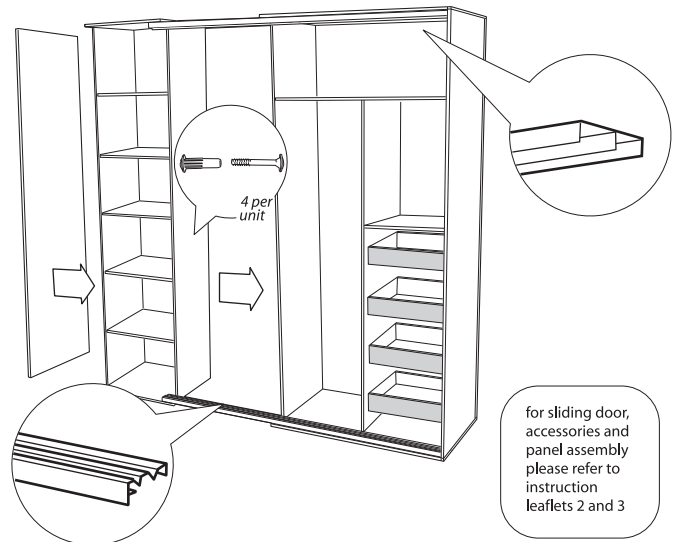
assemble plinth (as required), and position units and end panels as according to your layout planner



sliding doors

4

butt cabinets together- connecting units with cabinet joiners provided- and fix top and bottom track and end panels



hinged doors & sliding doors

4

assemble metal sided drawers, utilising the provided inner drawer kits (plastic front brackets) using spacers where necessary to avoid hinges on doors

